



**Cable ID/ Test ID: PCF6-10CC-0150-B-001**

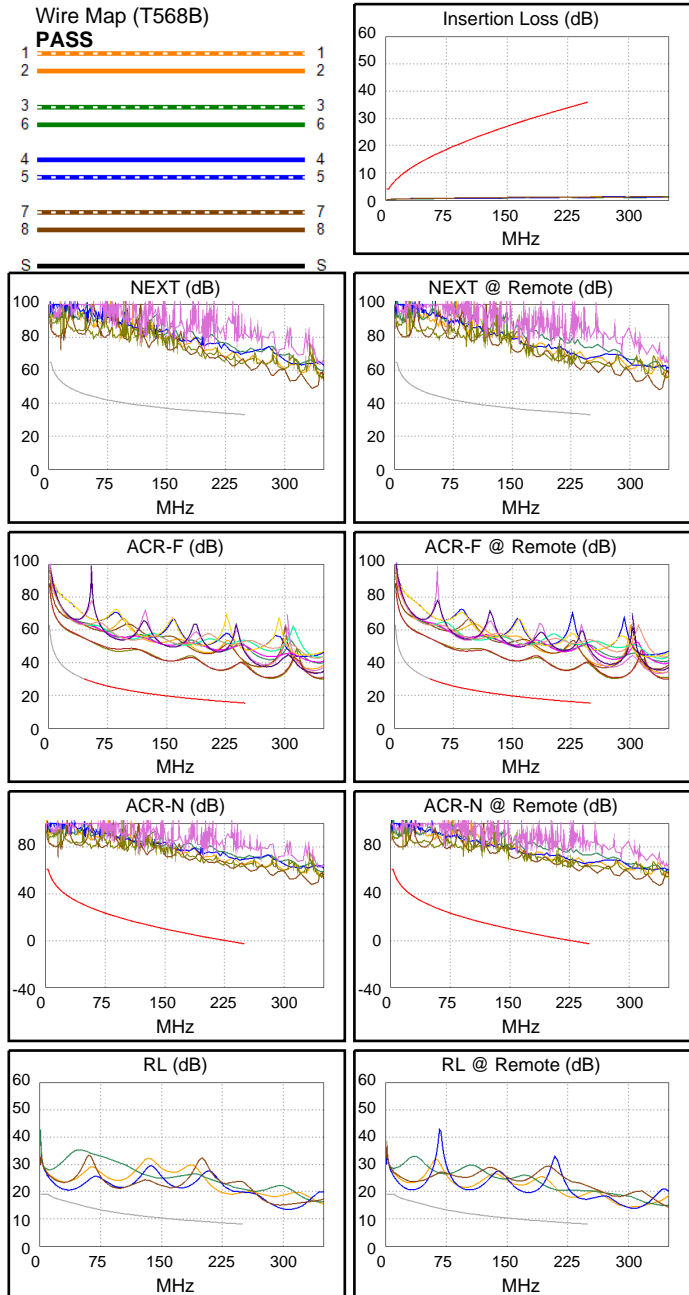
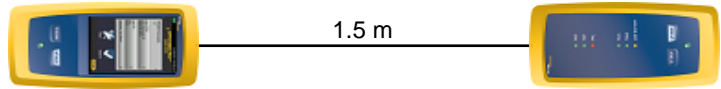
**Test Limit: ISO11801 Channel Class E**  
Limits Version: V7.11  
Date / Time: 2026/01/27 09:11:34  
Operator: Lanberg  
**Headroom 20.5 dB (NEXT 3,6-4,5)**  
Cable Type: Cat 6 F/UTP  
NVP: 70.0%

Main: Versiv  
S/N: 24410021  
Software Version: V6.14 Build 9  
Calibration Date: 2025/05/28  
Adapter: DSX-602 (DSX-CHA004)  
S/N: 25073276

**Test Summary: PASS**

Remote: Versiv  
S/N: 24250049  
Software Version: V6.14 Build 9  
Calibration Date: 2025/05/28  
Adapter: DSX-602R (DSX-CHA004)  
S/N: 25073277

Length (m), Limit 100.0	[Pair 1,2]	1.5
Prop. Delay (ns), Limit 555	[Pair 1,2]	7
Delay Skew (ns), Limit 50	[Pair 1,2]	0
Resistance (ohms), Limit 25.00	[Pair 7,8]	1.29
Insertion Loss Margin (dB)	[Pair 1,2]	32.1
Frequency (MHz)	[Pair 1,2]	217.5
Limit (dB)	[Pair 1,2]	33.2



Worst Case Margin Worst Case Value

N/A	MAIN	SR	MAIN	SR
Worst Pair	3,6-4,5	3,6-4,5	3,6-4,5	3,6-4,5
<b>NEXT (dB)</b>	20.5	20.8	28.4	27.2
Freq. (MHz)	3.9	3.0	235.0	237.5
Limit (dB)	63.3	65.0	33.6	33.5
Worst Pair	3,6	3,6	3,6	3,6
<b>PS NEXT (dB)</b>	20.6	21.6	29.8	28.6
Freq. (MHz)	3.9	3.0	243.0	237.5
Limit (dB)	60.8	62.0	30.4	30.5

PASS	MAIN	SR	MAIN	SR
Worst Pair	3,6-4,5	4,5-3,6	3,6-4,5	4,5-3,6
<b>ACR-F (dB)</b>	18.7	18.7	19.0	19.0
Freq. (MHz)	216.0	216.0	222.0	222.0
Limit (dB)	16.6	16.6	16.3	16.3
Worst Pair	4,5	3,6	4,5	3,6
<b>PS ACR-F (dB)</b>	21.3	21.2	21.6	21.4
Freq. (MHz)	216.0	216.0	222.0	219.5
Limit (dB)	13.6	13.6	13.3	13.4

PASS	MAIN	SR	MAIN	SR
Worst Pair	3,6-4,5	3,6-4,5	3,6-4,5	3,6-4,5
<b>ACR-N (dB)</b>	24.5	24.6	62.2	61.2
Freq. (MHz)	3.9	3.0	235.0	237.5
Limit (dB)	59.1	61.0	-1.1	-1.4
Worst Pair	3,6	3,6	3,6	3,6
<b>PS ACR-N (dB)</b>	24.7	25.5	63.7	62.7
Freq. (MHz)	3.9	3.0	237.0	237.5
Limit (dB)	56.6	58.0	-4.3	-4.4

N/A	MAIN	SR	MAIN	SR
Worst Pair	4,5	4,5	1,2	4,5
<b>RL (dB)</b>	4.1	4.0	10.8	9.1
Freq. (MHz)	32.3	30.9	239.5	250.0
Limit (dB)	16.5	16.6	8.2	8.0

Compliant Network Standards:  
 10BASE-T      100BASE-TX      100BASE-T4  
 1000BASE-T    2.5GBASE-T      5GBASE-T  
 ATM-25        ATM-51            ATM-155  
 100VG-AnyLan    TR-4              TR-16 Active  
 TR-16 Passive