



Cable ID: PCF8-10CU-0200-S

Test Limit: ISO11801 Channel Class I

Limits Version: V7.6

Date / Time: 03/07/2023 02:11:38 PM

Operator: QC

Headroom 17.4 dB (NEXT 3,6-4,5)

Cable Type: Cat 8 S/FTP

NVP: 72.0%

Main: Versiv

S/N: 1824298

Software Version: V6.6 Build 2

Calibration Date: 12/02/2022

Adapter: DSX-8000 (DSX-CHA804)

S/N: 22211877

Test Summary: PASS

Remote: Versiv

S/N: 1820302

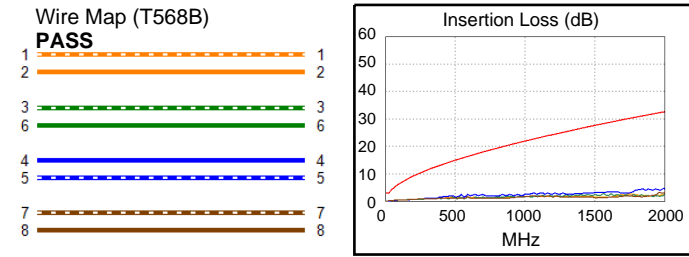
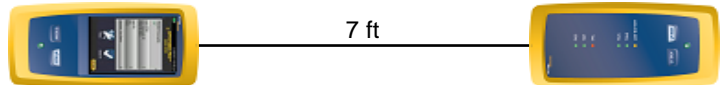
Software Version: V6.6 Build 2

Calibration Date: 12/02/2022

Adapter: DSX-8000R (DSX-CHA804)

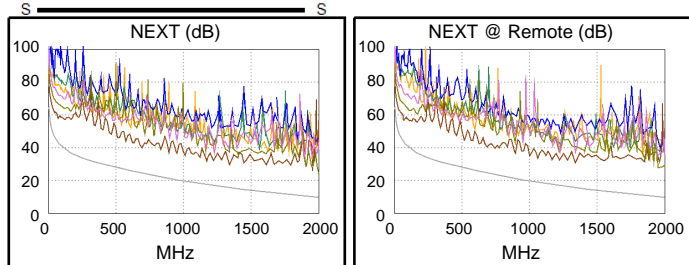
S/N: 22211865

Length (ft)	[Pair 1,2]	7
Prop. Delay (ns), Limit 169	[Pair 7,8]	10
Delay Skew (ns), Limit 16	[Pair 1,2]	0
Resistance (ohms), Limit 6.40	[Pair 1,2]	0.45
Insertion Loss Margin (dB)	[Pair 4,5]	27.3
Frequency (MHz)	[Pair 4,5]	1946.0
Limit (dB)	[Pair 4,5]	32.2

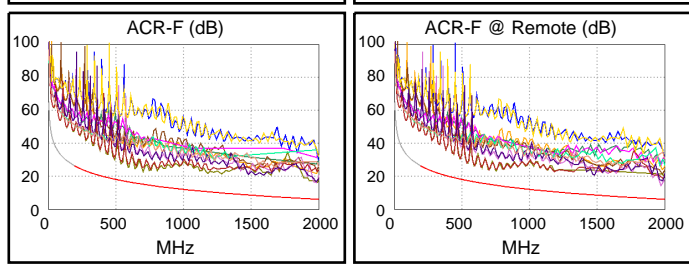


Worst Case Margin Worst Case Value

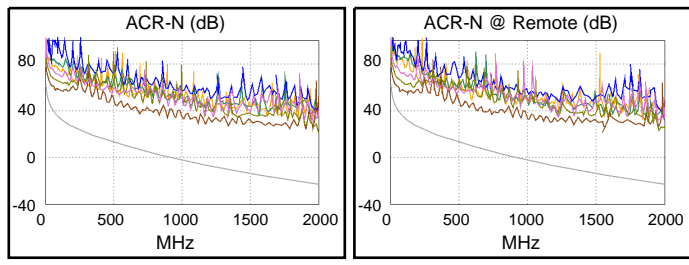
PASS	MAIN	SR	MAIN	SR
Worst Pair	3,6-4,5	3,6-4,5	3,6-7,8	3,6-7,8
NEXT (dB)	17.4	20.5	14.6	16.3
Freq. (MHz)	1788.	1848.	2000.	1958.
Limit (dB)	11.3	10.8	9.6	9.9
Worst Pair	4,5	4,5	3,6	3,6
PS NEXT (dB)	20.2	22.8	16.8	18.0
Freq. (MHz)	1788.	1848.	1958.	1958.
Limit (dB)	8.3	7.8	6.9	6.9



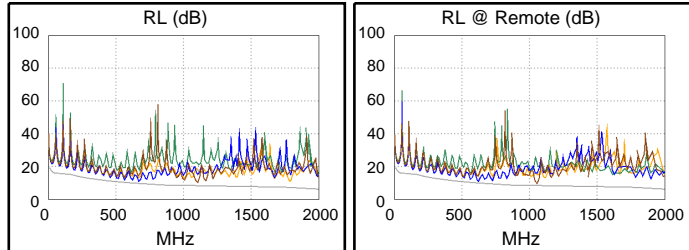
PASS	MAIN	SR	MAIN	SR
Worst Pair	3,6-4,5	3,6-7,8	3,6-7,8	3,6-7,8
ACR-F (dB)	7.6	8.1	8.6	8.1
Freq. (MHz)	700.0	1968.	1972.	1968.
Limit (dB)	15.1	6.1	6.1	6.1
Worst Pair	4,5	7,8	3,6	7,8
PS ACR-F (dB)	10.5	10.9	11.3	10.9
Freq. (MHz)	700.0	1968.	1972.	1968.
Limit (dB)	12.1	3.1	3.1	3.1



PASS	MAIN	SR	MAIN	SR
Worst Pair	3,6-4,5	3,6-7,8	3,6-7,8	3,6-7,8
ACR-N (dB)	44.0	47.3	43.9	45.3
Freq. (MHz)	1788.	1848.	2000.	1958.
Limit (dB)	-19.3	-20.4	-23.1	-22.3
Worst Pair	4,5	4,5	7,8	7,8
PS ACR-N (dB)	46.8	49.6	46.7	47.8
Freq. (MHz)	1788.	1848.	2000.	1958.
Limit (dB)	-22.3	-23.4	-26.1	-25.3



PASS	MAIN	SR	MAIN	SR
Worst Pair	4,5	4,5	1,2	4,5
RL (dB)	5.5	5.4	3.9	5.4
Freq. (MHz)	1670.	1902.	1788.	1902.
Limit (dB)	7.6	6.6	7.1	6.6



Compliant Network Standards:
 10BASE-T 100BASE-TX 100BASE-T4
 1000BASE-T 2.5GBASE-T 5GBASE-T
 10GBASE-T 25GBASE-T 40GBASE-T
 ATM-25 ATM-51 ATM-155
 100VG-AnyLan TR-4 TR-16 Active
 TR-16 Passive