



Cable ID: PCF6A-10CU-1000

Date / Time: 03/13/2020 02:02:37 PM

Headroom 4.8 dB (NEXT 36-45)

Test Limit: ISO11801 Channel Class Ea

Cable Type: Cat 7 S/FTP

NVP: 78.0%

Software Version: V6.2 Build 1

Limits Version: V7.2

Calibration Start Date:

Main (Module): 12/03/2018

Remote (Module): 12/03/2018

Test Summary: PASS

Model: DSX-8000

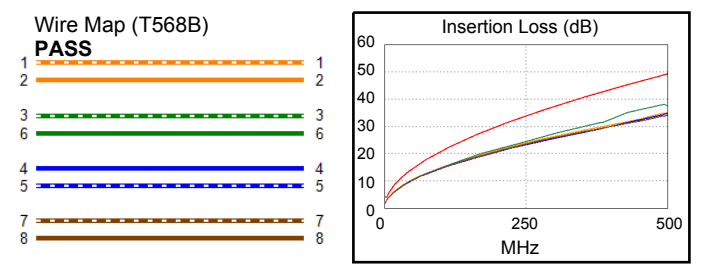
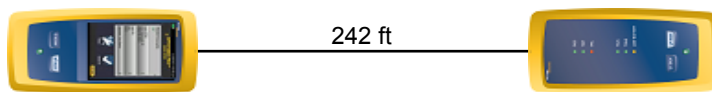
Main S/N: 1820302

Remote S/N: 1824298

Main Adapter: DSX-CHA804

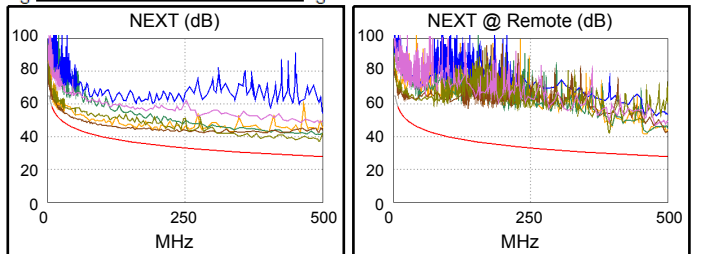
Remote Adapter: DSX-CHA804

Length (ft), Limit 328	[Pair 45]	242
Prop. Delay (ns), Limit 555	[Pair 12]	324
Delay Skew (ns), Limit 50	[Pair 12]	8
Resistance (ohms), Limit 25.00	[Pair 12]	13.00
Insertion Loss Margin (dB)	[Pair 36]	11.0
Frequency (MHz)	[Pair 36]	495.0
Limit (dB)	[Pair 36]	49.0

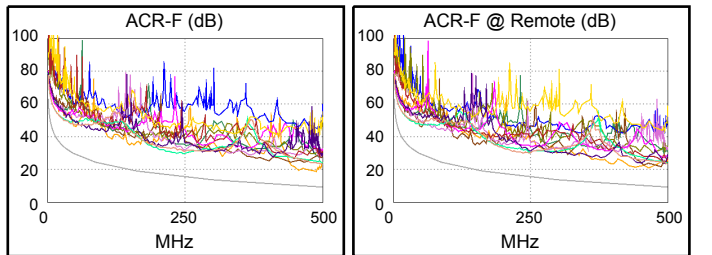


Worst Case Margin Worst Case Value

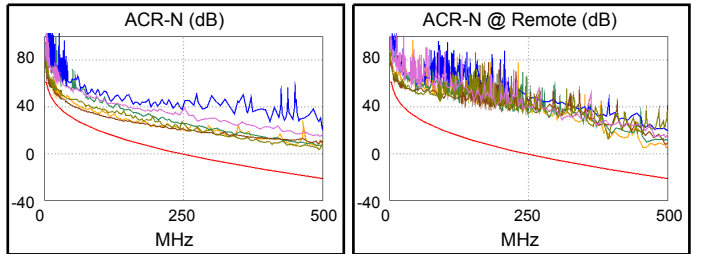
PASS	MAIN	SR	MAIN	SR
Worst Pair	36-45	36-45	36-78	12-36
NEXT (dB)	4.8	8.2	9.2	12.9
Freq. (MHz)	8.9	8.9	493.0	456.0
Limit (dB)	57.4	57.4	28.0	28.6
Worst Pair	36	36	36	12
PS NEXT (dB)	4.9	8.2	10.9	13.7
Freq. (MHz)	9.0	7.4	493.0	462.0
Limit (dB)	54.8	56.2	24.9	25.4



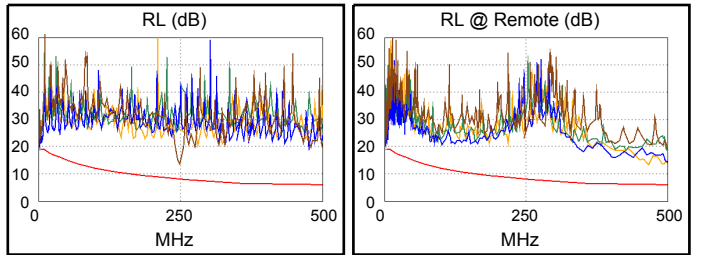
PASS	MAIN	SR	MAIN	SR
Worst Pair	12-36	12-36	12-36	12-36
ACR-F (dB)	8.7	10.6	8.8	10.8
Freq. (MHz)	477.0	443.0	485.0	463.0
Limit (dB)	9.7	10.3	9.5	9.9
Worst Pair	36	36	36	36
PS ACR-F (dB)	10.9	11.6	10.9	12.0
Freq. (MHz)	477.0	443.0	477.0	463.0
Limit (dB)	6.7	7.3	6.7	6.9



PASS	MAIN	SR	MAIN	SR
Worst Pair	36-45	36-45	36-78	12-36
ACR-N (dB)	6.4	9.3	24.3	23.6
Freq. (MHz)	3.5	7.3	493.0	462.0
Limit (dB)	60.0	53.3	-20.9	-18.7
Worst Pair	36	36	36	36
PS ACR-N (dB)	6.5	9.7	21.8	26.4
Freq. (MHz)	3.5	7.3	493.0	497.0
Limit (dB)	57.5	50.8	-24.0	-24.3



PASS	MAIN	SR	MAIN	SR
Worst Pair	45	45	78	12
RL (dB)	2.1	3.7	5.5	7.3
Freq. (MHz)	5.3	3.9	248.0	466.0
Limit (dB)	19.0	19.0	8.1	6.0



Compliant Network Standards:

10BASE-T	100BASE-TX	100BASE-T4
1000BASE-T	2.5GBASE-T	5GBASE-T
10GBASE-T	ATM-25	ATM-51
ATM-155	100VG-AnyLan	TR-4
TR-16 Active	TR-16 Passive	