



Cable ID: LCU5-12CU-0305-B

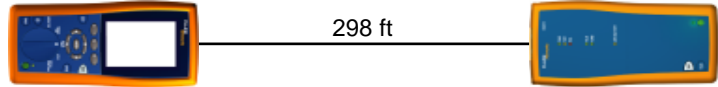
Date / Time: 12/03/2019 03:14:36 PM
Headroom 3.7 dB (NEXT 12-78)
Test Limit: TIA Cat 5e Perm. Link
 Cable Type: Cat 5e U/UTP
 NVP: 69.0%

Operator: JXT
 Software Version: 2.7800
 Limits Version: 1.9500
 Calibration Date:
 Main (Tester): 08/30/2012
 Remote (Tester): 08/30/2012

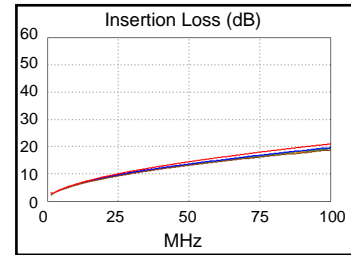
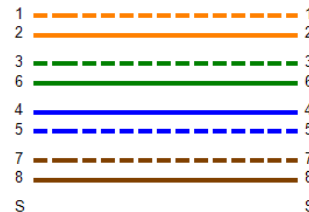
Test Summary: PASS

Model: DTX-1800
 Main S/N: 2156539
 Remote S/N: 2156540
 Main Adapter: DTX-PLA002
 Remote Adapter: DTX-PLA002

Length (ft), Limit 295	[Pair 78]	298
Prop. Delay (ns), Limit 498	[Pair 45]	451
Delay Skew (ns), Limit 44	[Pair 45]	12
Resistance (ohms)	[Pair 45]	20.8
Insertion Loss Margin (dB)	[Pair 45]	1.4
Frequency (MHz)	[Pair 45]	100.0
Limit (dB)	[Pair 45]	21.0

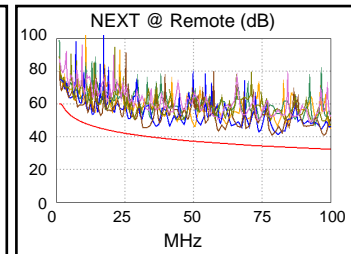
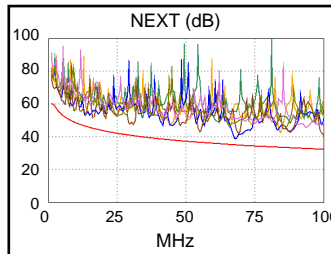


Wire Map (T568B)
PASS

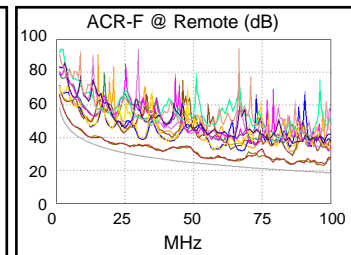
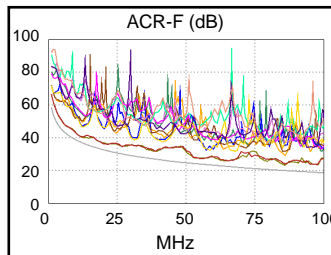


Worst Case Margin Worst Case Value

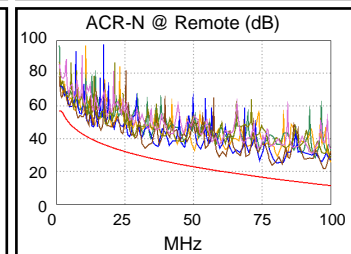
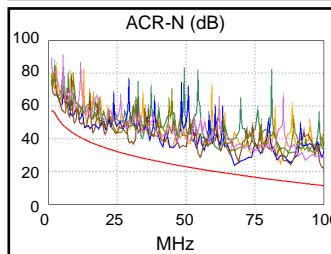
PASS	MAIN	SR	MAIN	SR
Worst Pair	12-78	36-45	12-78	36-45
NEXT (dB)	3.7	4.7	3.7	7.0
Freq. (MHz)	67.8	31.8	67.8	78.5
Limit (dB)	35.1	40.4	35.1	34.0
Worst Pair	78	45	78	12
PS NEXT (dB)	6.1	7.1	6.1	9.2
Freq. (MHz)	67.8	31.8	67.8	80.5
Limit (dB)	32.1	37.4	32.1	30.9



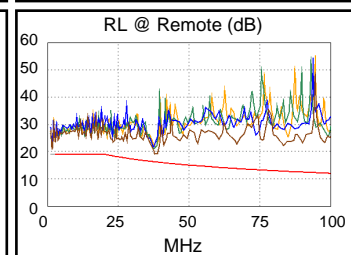
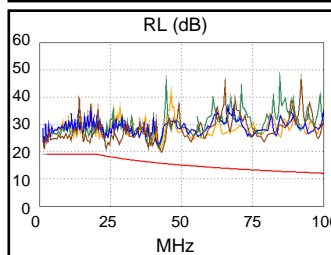
PASS	MAIN	SR	MAIN	SR
Worst Pair	36-45	36-45	36-45	36-45
ACR-F (dB)	3.1	3.1	3.3	4.1
Freq. (MHz)	64.8	55.3	85.8	97.3
Limit (dB)	22.4	23.8	19.9	18.9
Worst Pair	36	36	36	36
PS ACR-F (dB)	5.6	5.6	5.6	5.6
Freq. (MHz)	64.0	86.0	85.8	86.0
Limit (dB)	19.5	16.9	16.9	16.9



N/A	MAIN	SR	MAIN	SR
Worst Pair	12-78	36-45	36-45	36-45
ACR-N (dB)	5.4	5.2	10.1	9.9
Freq. (MHz)	67.8	31.8	100.0	97.5
Limit (dB)	18.1	29.1	11.3	11.8
Worst Pair	78	45	45	36
PS ACR-N (dB)	7.8	7.6	12.3	12.6
Freq. (MHz)	67.8	31.8	100.0	97.5
Limit (dB)	15.1	26.1	8.3	8.8



PASS	MAIN	SR	MAIN	SR
Worst Pair	78	78	78	78
RL (dB)	2.8	1.7	4.0	1.7
Freq. (MHz)	23.4	38.3	43.0	38.3
Limit (dB)	18.3	16.2	15.7	16.2



Compliant Network Standards:
 10BASE-T 100BASE-TX 100BASE-T4
 1000BASE-T 2.5GBASE-T 5GBASE-T
 ATM-25 ATM-51 ATM-155
 100VG-AnyLan TR-4 TR-16 Active
 TR-16 Passive